

MORE
AND
BETTER
DISCIPLES
OF
JESUS
CHRIST

TERRA NOVA CHURCH

PLAN

Sermon Series 2006 - 2014

OLD TESTAMENT

Key Figures of the OT

Minor Prophets

Ecclesiastes

Psalms

Proverbs

NEW TESTAMENT

Ephesians

Acts

John

James

1 Peter

2 Peter

1 Timothy

Romans

Luke

TOPICAL

7 Deadly Sins

Prophets, Priests & Kings

The Lord's Prayer

Apostles' Creed

Spiritual Disciplines

The Gospel

Urban Legends

Marriage

FAQ

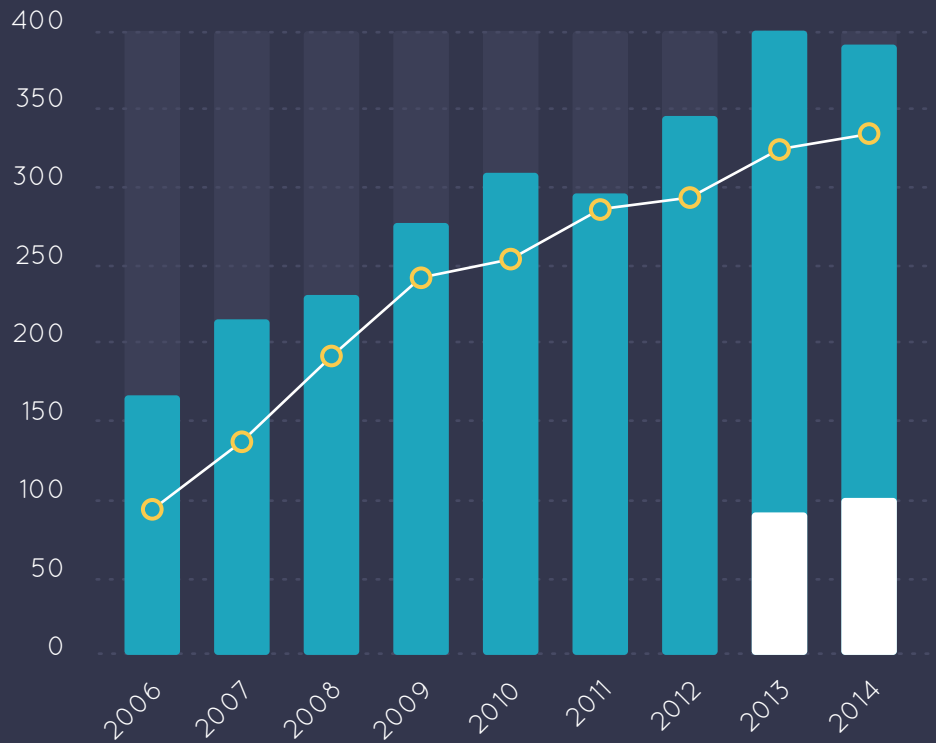
Ancient Upgrade

Prayer

Attributes of God

PEOPLE

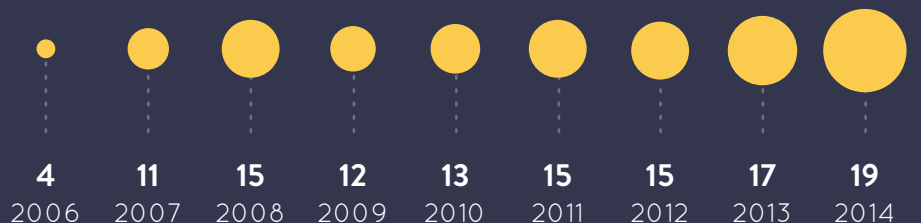
● Troy ● Saratoga ● Tribe Involvement



PLACE



TRIBES



PROVISION

Yearly Giving at Terra

● Troy ● Saratoga

\$121k

2006

\$204k

2007

\$280k

2008

\$327k

2009

\$361k

2010

\$392k

2011

\$476k

2012

\$397/129k

2013

\$421/151k

2014

ACTS 29 CHURCHES

08

2006 - 2008

18

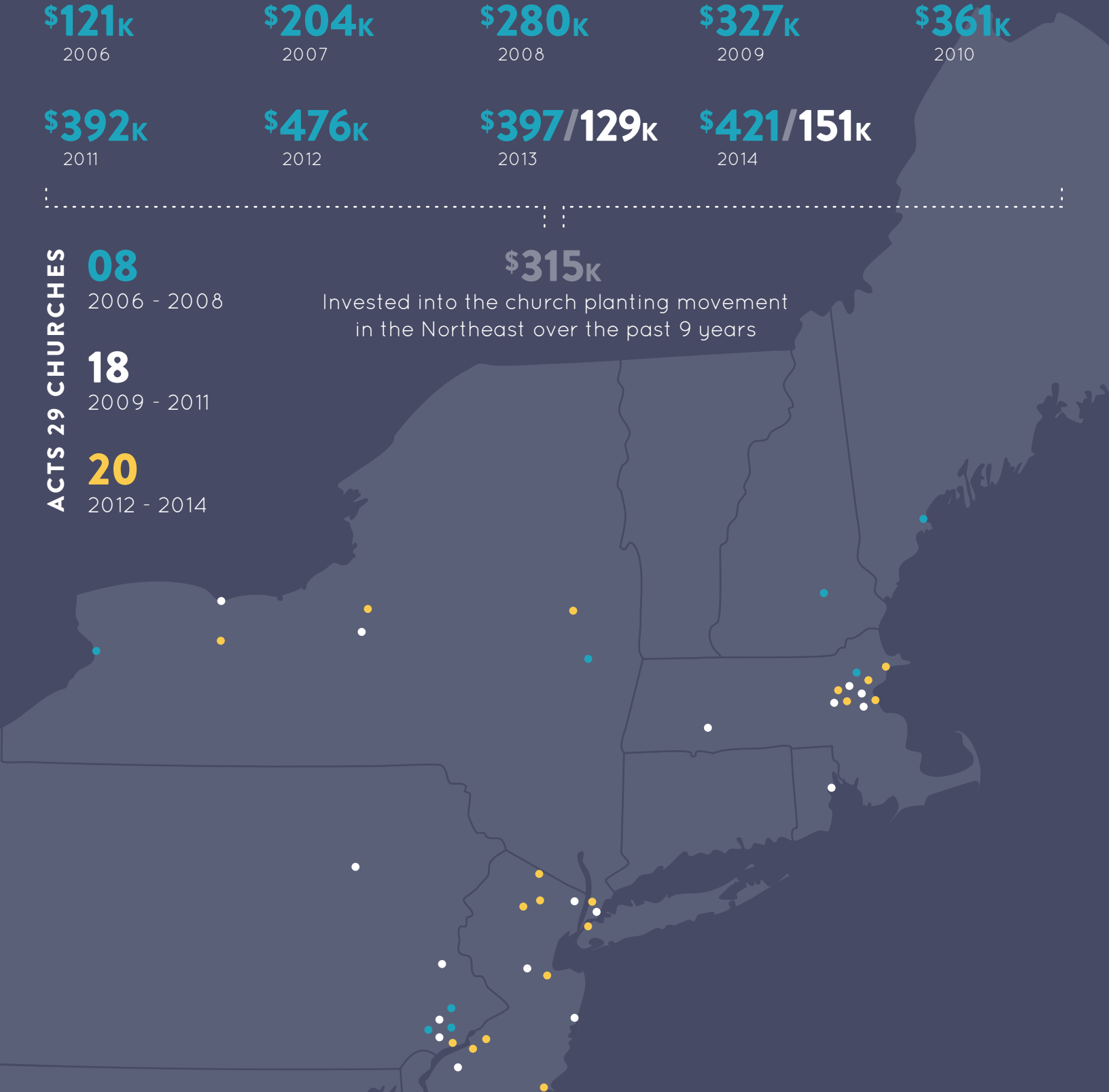
2009 - 2011

20

2012 - 2014

\$315k

Invested into the church planting movement in the Northeast over the past 9 years



SEE THE FUTURE FOR TERRA NOVA CHURCH →

2015 TRANSITIONS



PEOPLE

Pastoral
Staff
Leadership



PLACE

Communications
Mission
Tribe Multiplication



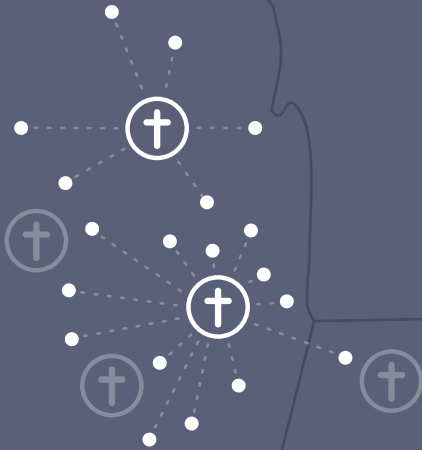
PLAN

Kids, Youth & College
Saratoga (time & place)
Church Multiplication

Our call is to participate in God's **PROVISION** for His people

THE NEXT BIG THING...

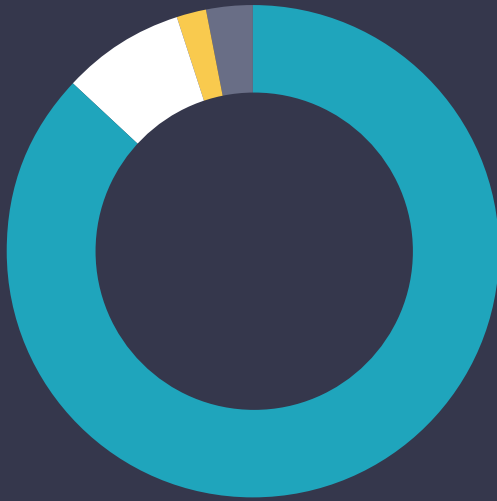
We are working with Churches, Universities and Agencies to build a pastoral residency that embeds new pastors at Terra Nova for the benefit of the local church and the Northeast.



PRAY • SERVE  GIVE • BELONG

Please join us on this journey

2014 FINANCIAL REPORT



SOURCES \$661,448

GENERAL GIVING

\$572,091 / 87%

DESIGNATED GIVING

\$51,411 / 8%

CHURCH PLANTING SUPPORT

\$16,508 / 2%

OTHER INCOME

\$21,438 / 3%



USES \$658,792

OPERATIONS

\$464,340 / 71%

MONASTIC

\$86,834 / 13%

MISSIONAL

\$107,618 / 16%

MONASTIC

Sunday Gathered: \$55,142

Discipleship \$31,692

MISSIONAL

Church Planting: \$54,076

Justice & Mercy: \$53,542

OPERATIONS

Personnel: \$311,763

General Operations: \$152,577

CASH BALANCES \$126,624

OPERATING RESERVES

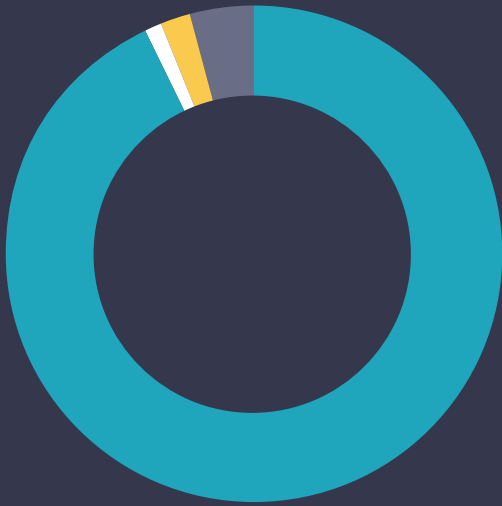
\$117,574

DESIGNATED RESERVES

\$9,050

2015 BUDGET

2015 is a year to invest into our transitions



SOURCES \$674,720

GENERAL GIVING

\$624,000 / 93%

DESIGNATED GIVING

\$2,750 / 0%

CHURCH PLANTING SUPPORT

\$20,470 / 3%

OTHER INCOME

\$ 27,500 / 4%



USES \$720,165

OPERATIONS

\$ 531,110 / 74%

MONASTIC

\$110,325 / 15%

MISSIONAL

\$78,730 / 11%

MONASTIC

■ Sunday Gathered: \$ 57,890

■ Discipleship \$52,435

MISSIONAL

■ Church Planting: \$74,870

■ Justice & Mercy: \$3,500

OPERATIONS

■ Personnel: \$380,370

■ General Operations: \$150,740

“

WHY ARE WE BUDGETING TO SPEND MORE THAN WE TAKE IN?

Because we need to invest so we can fund the growth of Terra Nova. Please join us in giving towards our future.